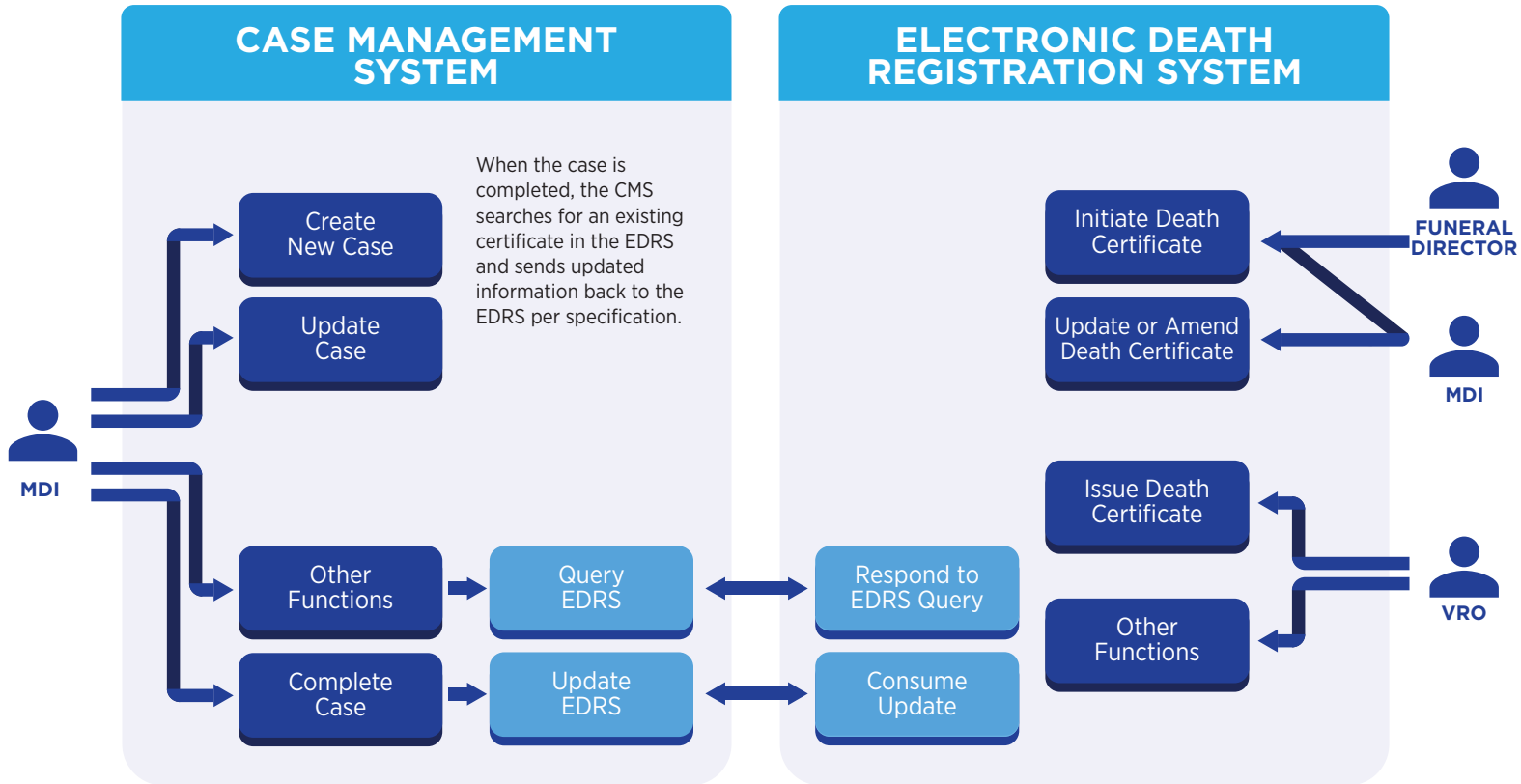


# MEDICOLEGAL DEATH INVESTIGATION OFFICE WITH VITAL RECORDS OFFICE

The Medicolegal Death Investigation (MDI) Office utilizes a Case Management System (CMS) that via an Application Programming Interface (API), sends a query to the Vital Records Office (VRO) Electronic Death Registration System (EDRS) to get death certificate data on a decedent. If the EDRS can find the decedent, it returns the data from the death certificate to the CMS. If not, it returns an error message.



## KEY TERMS AND DEFINITIONS

### SYSTEM FUNCTIONS

System Functions – Example User Interactions, not exhaustive.

### APPLICATION PROGRAM INTERFACE (API)

Application Program Interface describes the functionality between systems. The API specification includes the data elements, security considerations, transport, etc. When a system receives/consumes updates additional system specific behavior may be initiated such as placing work in a work queue to notify someone of new activity.

### SYSTEM NAME

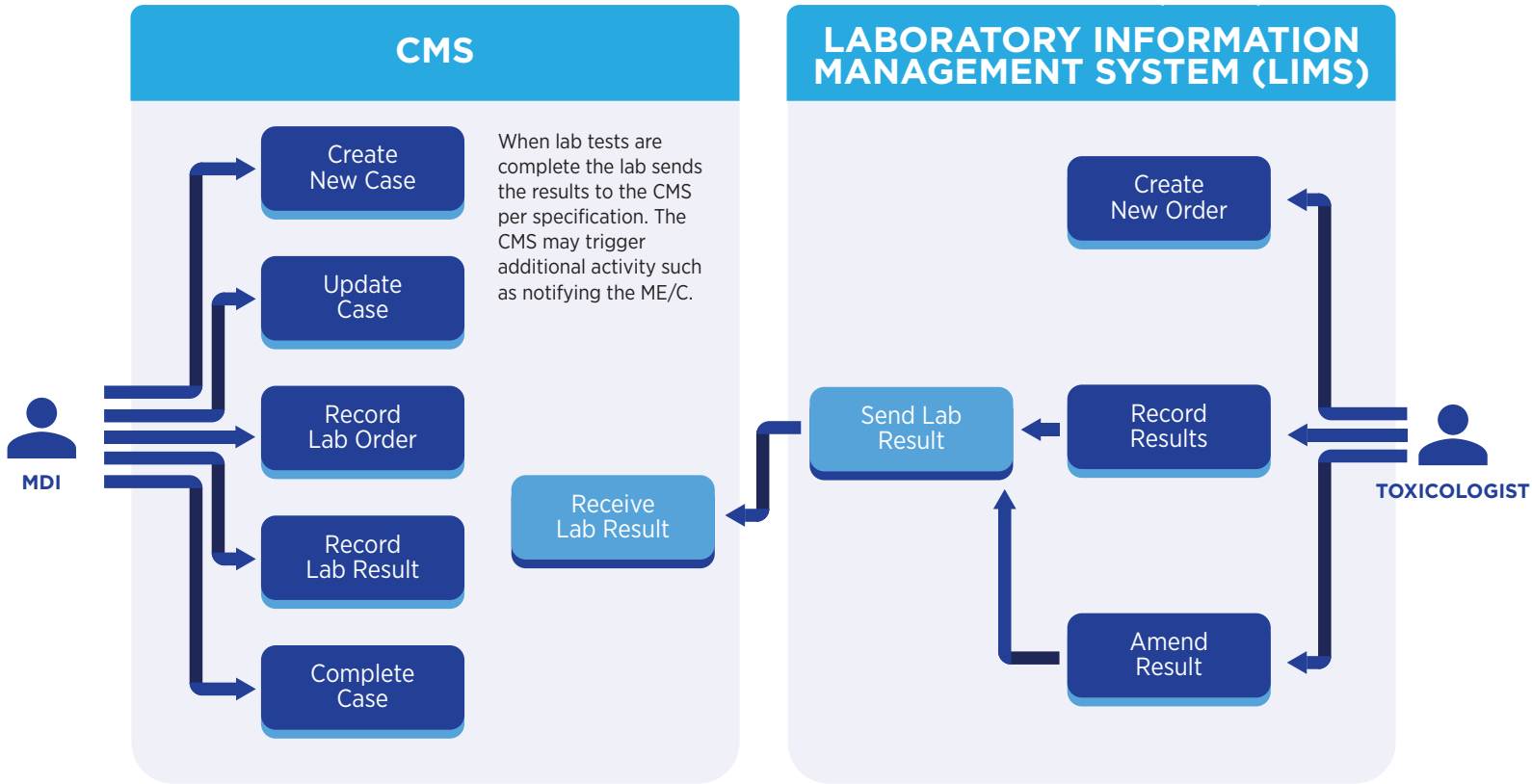
System Boundary – A rectangle that contains the various system functions, including the parts of the API that each system is responsible for.



**MDI** represents the medical examiner, coroner or other individuals in their office delegated to perform a particular use case. Some may only have access to functions.  
**Funeral Director** represents the funeral director or other individual in their office delegated to perform a particular use case. Some may only have access to limited functions.  
**VRO** represents the vital registrar or other individuals in the vital records office delegated to perform a particular use case. Some may only have access to limited functions.

# TOXICOLOGY LAB WITH MEDICOLEGAL DEATH INVESTIGATION OFFICE

When a toxicology lab result is completed or amended, the Toxicology Laboratory Information Management System (LIMS) sends (pushes) the lab result data to the Medicolegal Death Investigation (MDI) Office Case Management System (CMS) via an Application Program Interface (API). The CMS receives and stores it in its system. The CMS may also create a message or entry in a work queue to notify the CMS that activity has taken place.



## KEY TERMS AND DEFINITIONS

### SYSTEM FUNCTIONS

System Functions – Example User Interactions, not exhaustive.

### APPLICATION PROGRAM INTERFACE (API)

Application Program Interface describes the functionality between systems. The API specification includes the data elements, security considerations, transport, etc. When a system receives/consumes updates additional system specific behavior may be initiated such as placing work in a work queue to notify someone of new activity.

### SYSTEM NAME

System Boundary – A rectangle that contains the various system functions, including the parts of the API that each system is responsible for.

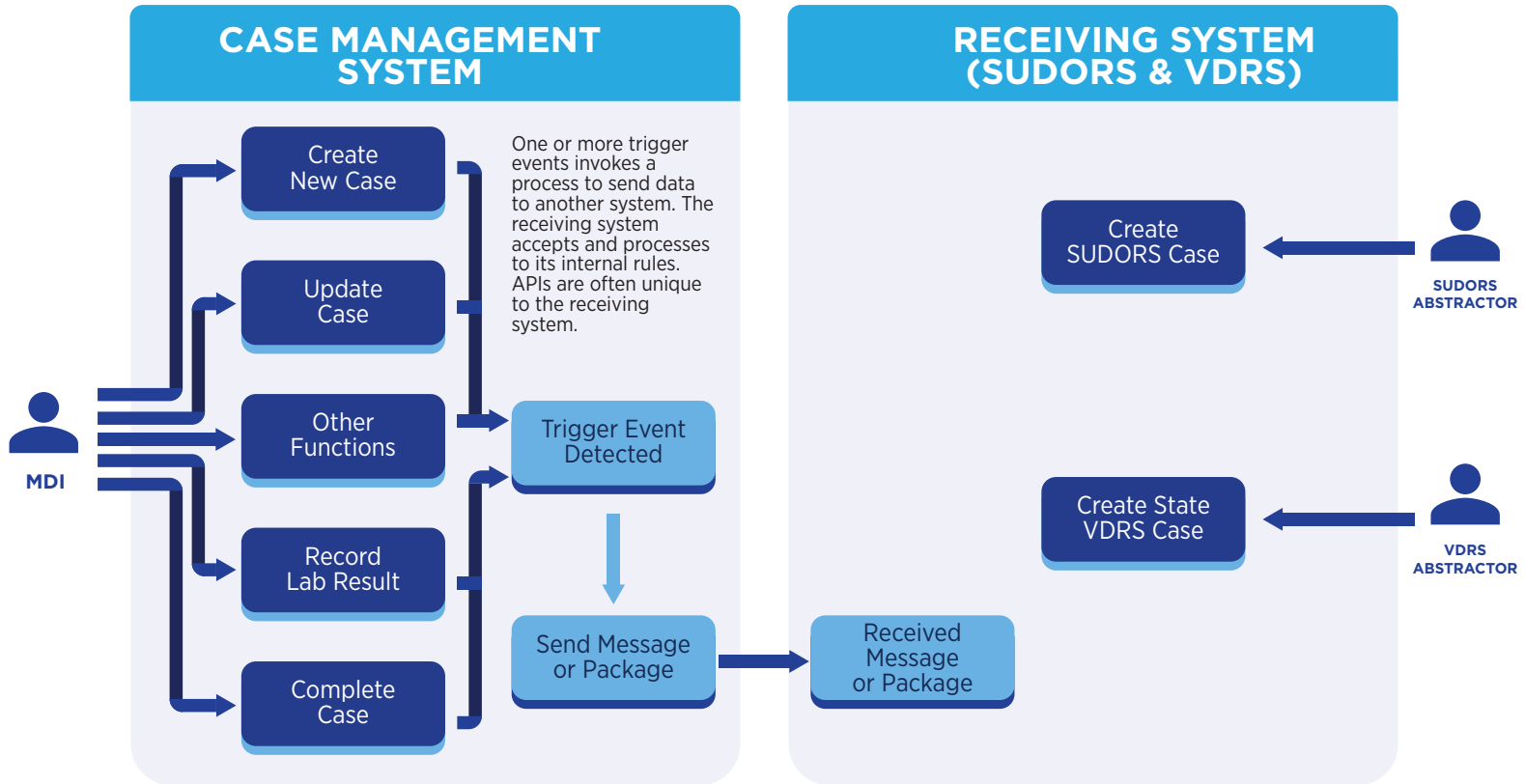


**Lab Staff** represents any individual in the toxicology laboratory with access to the LIMS. Some may only have access to limited functions.


**MDI** represents the Medical Examiner, Coroner or other individuals in their office delegated to perform a particular use case. Some may only have access to limited functions.

# MEDICOLEGAL DEATH INVESTIGATION OFFICE TO PUBLIC HEALTH

When the data in the Medicolegal Death Investigation (MDI) Case Management System (CMS) indicates the death investigation meets the inclusion criteria for the National Violent Death Reporting System (NVDRS) and/or the State Unintentional Drug Overdose Reporting System (SUDORS) (i.e., a trigger event), the CMS sends (pushes) the data to NVDRS and/or SUDORS or possibly an intermediate system. The send may be through an Application Programming Interface (API) or some locally defined process. The data must conform to a format defined by NVDRS and SUDORS.



## KEY TERMS AND DEFINITIONS

<b>SYSTEM FUNCTIONS</b>	System Functions – Example User Interactions, not exhaustive.
<b>APPLICATION PROGRAM INTERFACE (API)</b>	Application Program Interface describes the functionality between systems. The API specification includes the data elements, security considerations, transport, etc. When a system receives/consumes updates additional system specific behavior may be initiated such as placing work in a work queue to notify someone of new activity.
<b>SYSTEM NAME</b>	System Boundary – A rectangle that contains the various system functions, including the parts of the API that each system is responsible for.
	<p><b>SUDORS/VDRS</b> Abtractor represents the individual at the state level delegated to perform functions for a particular case. Some may only have access to limited functions.</p> <p><b>MDI</b> represents the Medical Examiner, Coroner or other individuals in their office delegated to perform a particular use case. Some may only have access to limited functions.</p>