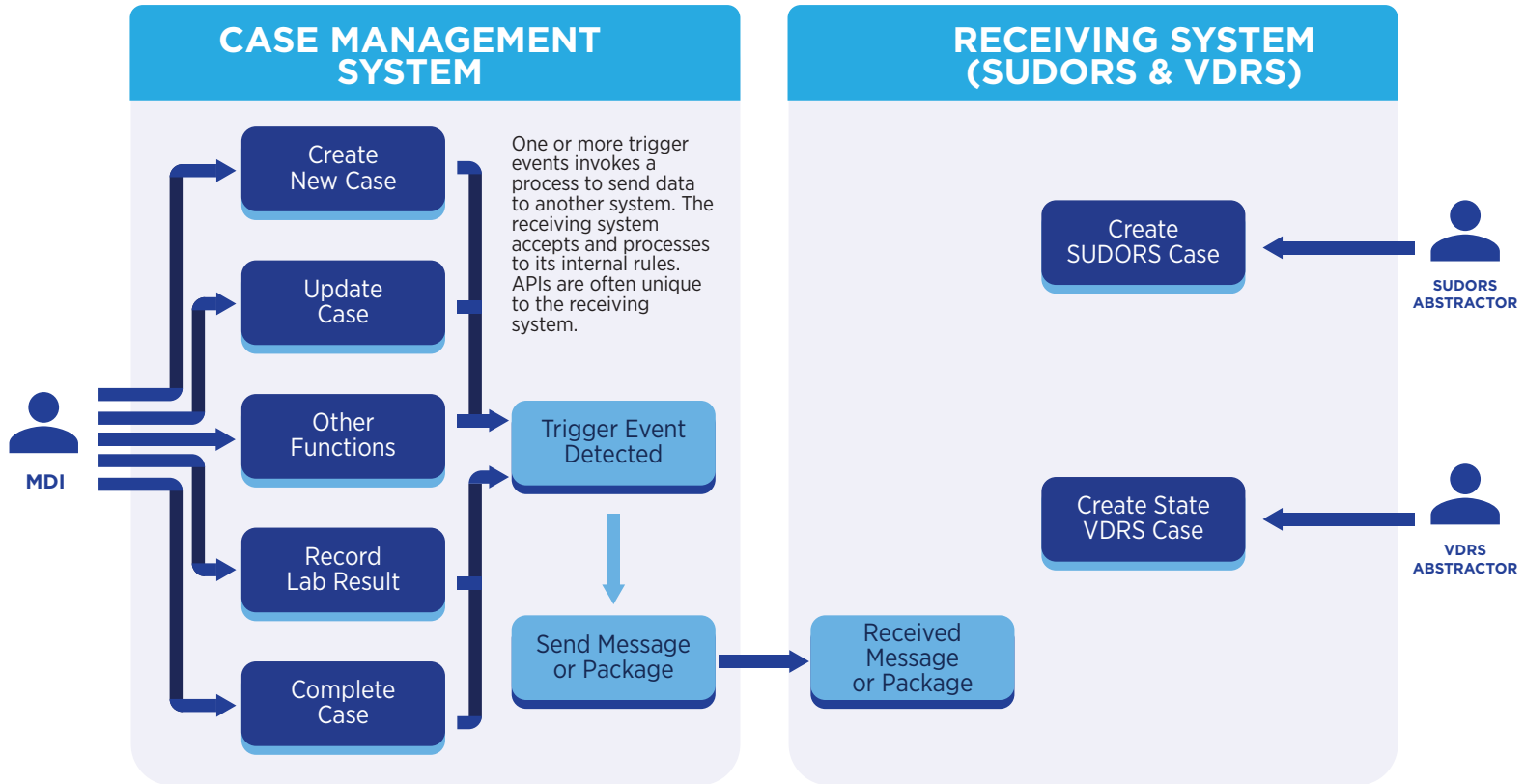


MEDICOLEGAL DEATH INVESTIGATION OFFICE TO PUBLIC HEALTH

When the data in the Medicolegal Death Investigation (MDI) Case Management System (CMS) indicates the death investigation meets the inclusion criteria for the National Violent Death Reporting System (NVDRS) and/or the State Unintentional Drug Overdose Reporting System (SUDORS) (i.e., a trigger event), the CMS sends (pushes) the data to NVDRS and/or SUDORS or possibly an intermediate system. The send may be through an Application Programming Interface (API) or some locally defined process. The data must conform to a format defined by NVDRS and SUDORS.



KEY TERMS AND DEFINITIONS

SYSTEM FUNCTIONS

System Functions – Example User Interactions, not exhaustive.

APPLICATION PROGRAM INTERFACE (API)

Application Program Interface describes the functionality between systems. The API specification includes the data elements, security considerations, transport, etc. When a system receives/consumes updates additional system specific behavior may be initiated such as placing work in a work queue to notify someone of new activity.

SYSTEM NAME

System Boundary – A rectangle that contains the various system functions, including the parts of the API that each system is responsible for.



SUDORS/VDRS Abtractor represents the individual at the state level delegated to perform functions for a particular case. Some may only have access to limited functions.

MDI represents the Medical Examiner, Coroner or other individuals in their office delegated to perform a particular use case. Some may only have access to limited functions.