



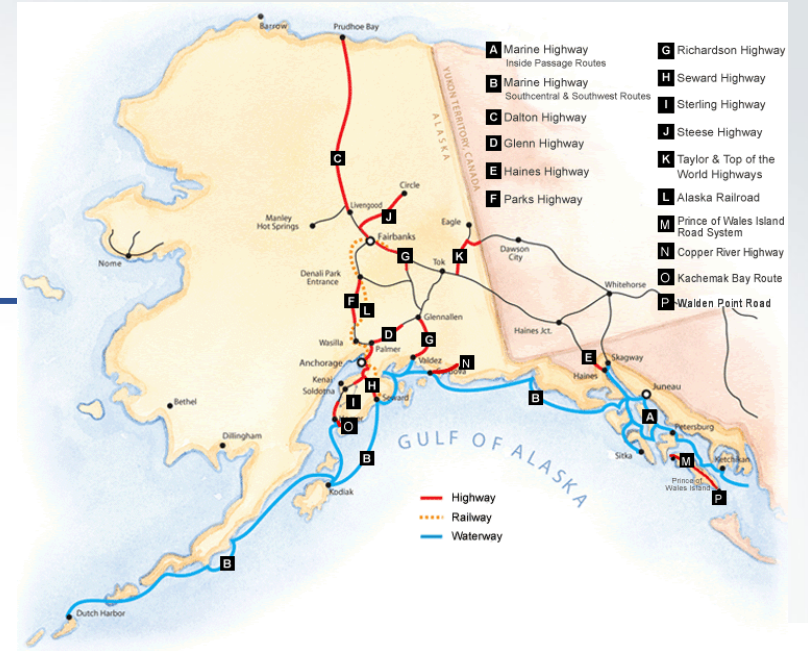
# TEFCA in Alaska

Call to Action to Advance Nationwide  
Data Exchange – San Francisco, CA

October 16, 2024

# Where are we coming from?

- Small, largely rural population
- 2.7m visitors each year
- Unique patterns of care
- High cost of care



# Why are we an early adopter?

---

- Reduce information gaps
- Efficiently manage data and staff time
- Application of TEFCA in more rural jurisdiction
- Leverage existing relationship with local HIE and CSS

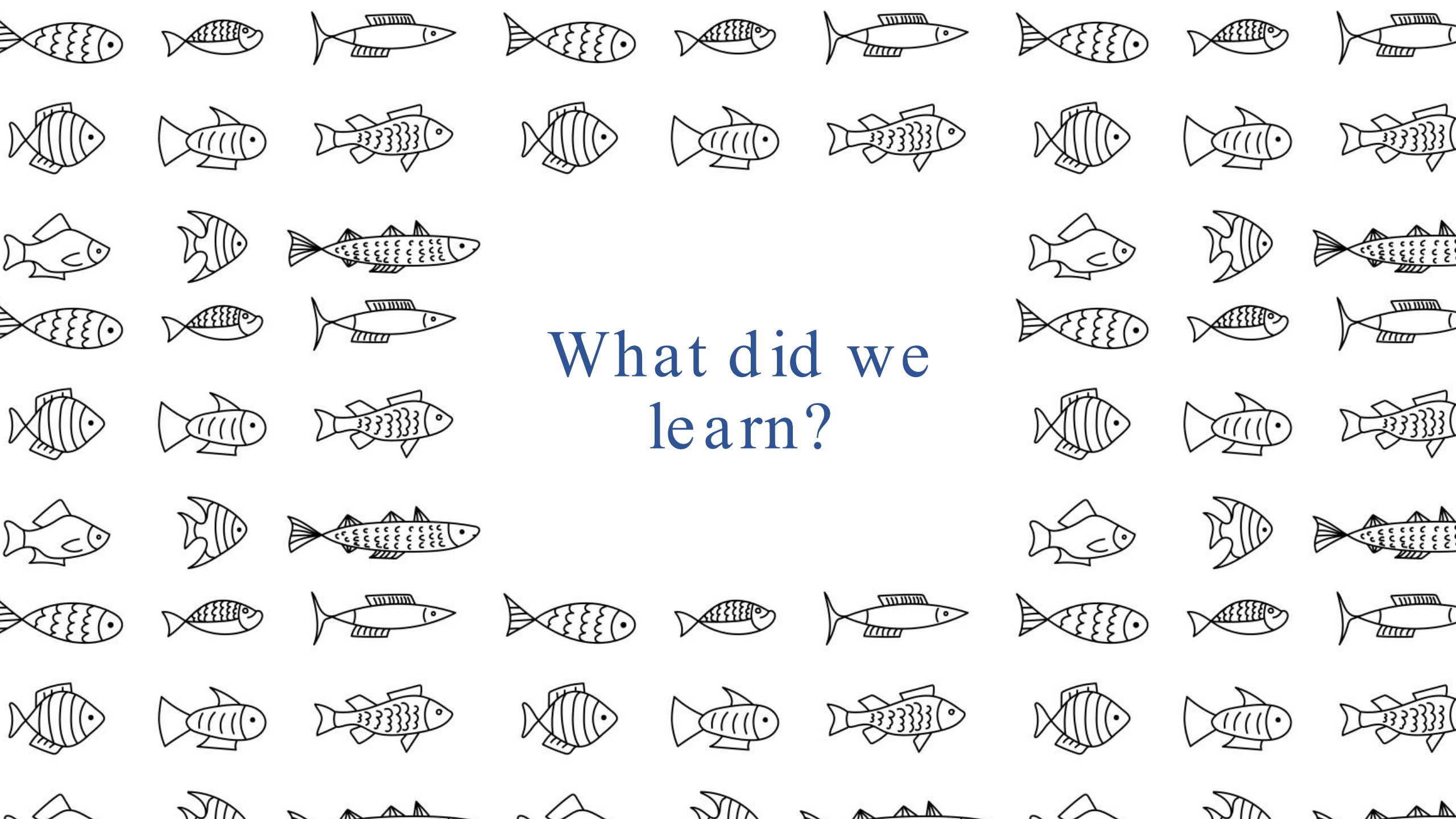


# What did we do?

---

- Conducted case investigation queries using PHA Portal!
- Review and alignment of legal agreements
  - Core HIE materials
  - Flow down Terms of Participation
- Internal communication and participation in peer learning groups





What did we  
learn?

# Partnership with local HIE

---

- Already have some case investigation query ability
- Facility participation is key
- Nexus for relationships and coordination



# Building on eCR progress

---

- Investment in onboarding facilities & authoring conditions
- Quality and utility of data received
- Managing increasing scale of data



# What's next?

---

- Investing in infrastructure for bi-directional exchange
- Not just transportation but transformation
- Assess different legal authorities and relevant exchange purposes

